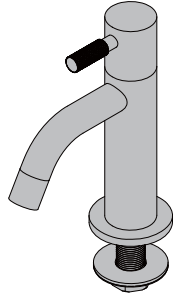
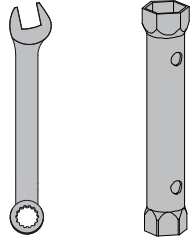


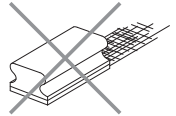
品番:BRS73-0702-020



Required tools:

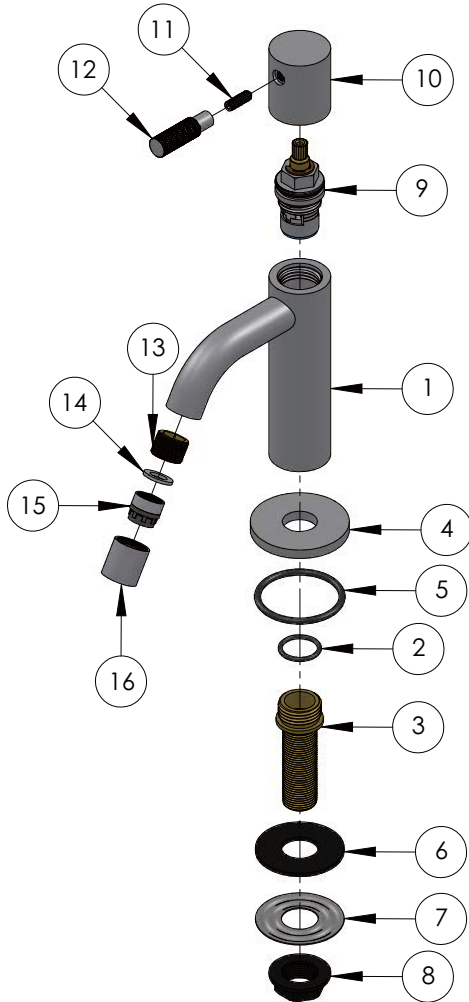


During installation one has to prevent damaging the surface of the product due to hitting it with other hard objects. Clean the tap with a soft fabric, never with chlorine nor a scouring pad.



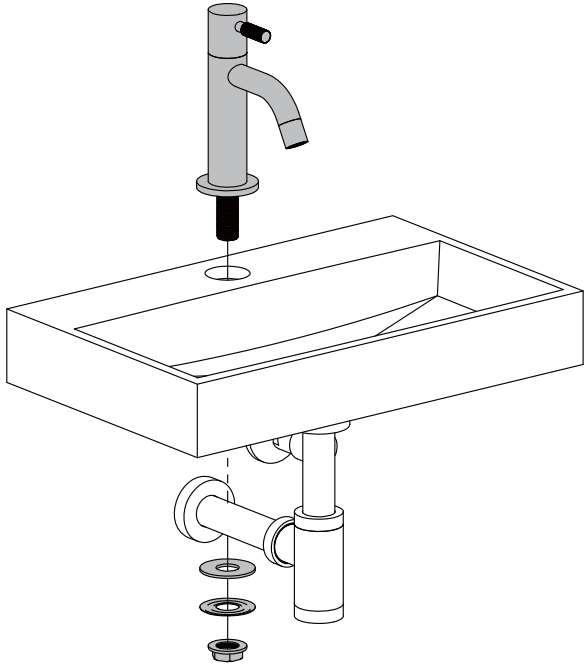
Part

- 1 body
- 2 O-ring transit piece
- 3 transit piece
- 4 rosette
- 5 O-ring rosette
- 6 plastic washer
- 7 metal washer
- 8 mounting nut
- 9 cartridge
- 10 top cap
- 11 M5x16 bolt
- 12 handle
- 13 small transit piece
- 14 O-ring aerator
- 15 aerator
- 16 tap mouth



1_

Screw the tap onto the fountain. Connect the hose (not included) to the tap and the angle valve.



2_

