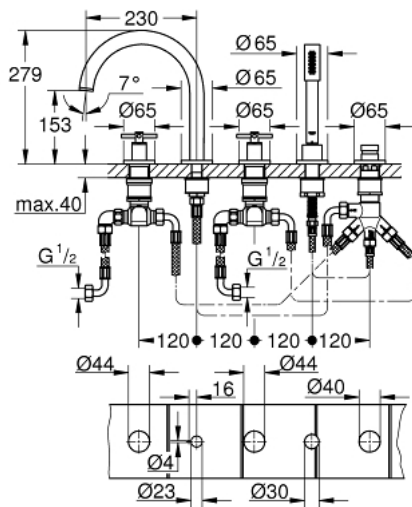
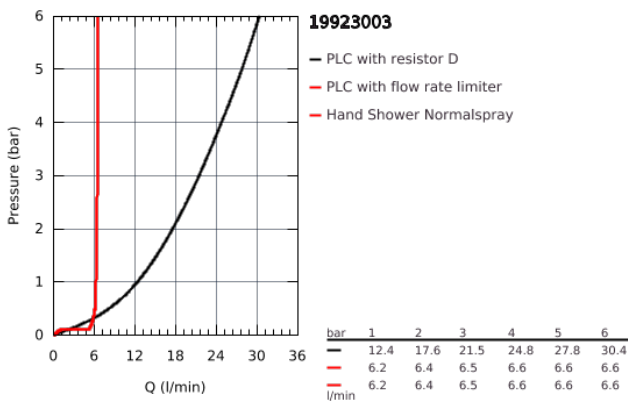


19 923 003 GROHE ATRIO 5-HOLE BATH/SHOWER COMBINATION

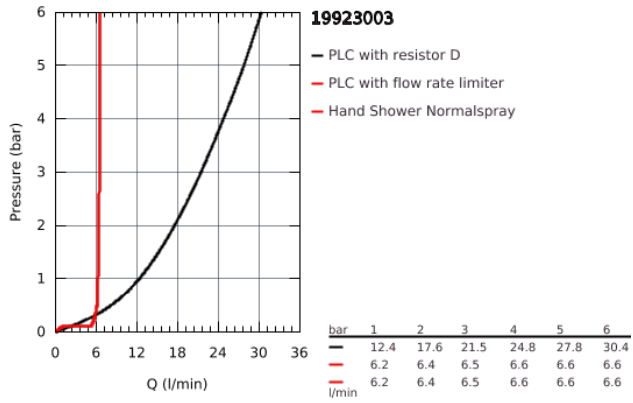


PRODUCT DESCRIPTION

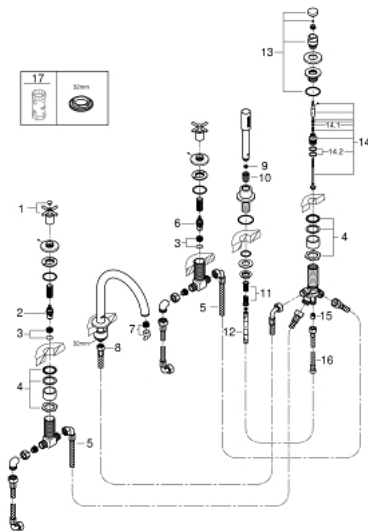
- ceramic headparts 1/2", 90°
- **GROHE StarLight** chrome finish
- Consisting of:
 - pre-assembled spout fixing
 - with cross handles
 - bath spout with mousseur and diverter bath/shower
- Sena hand shower 6.6 l/min
- shower hose 2000 mm
- flexible connection hoses
- connection for shower hose
- protected against backflow
- can be used with 29 037 002
- Two different sets of caps included. One set with "H" and "C" marking, one set without marking.



19 923 003 GROHE ATRIO 5-HOLE BATH/SHOWER COMBINATION



19 923 003 GROHE ATRIO 5-HOLE BATH/SHOWER COMBINATION



SPARE PARTS, April 2017 – now

- 1: Cross handle bath (Order-nr. 18033003)
- 2: Ceramic headpart 3/4", 180° (Order-nr. 45888000)
- 3: renewable seat set 3/4" (Order-nr. 45345000)
- 4: Repl.kit f.shank fastening 3/4" (Order-nr. 45444000)
- 5: Connecting hose (Order-nr. 48019000)
- 6: Ceramic headpart 3/4", 180° (Order-nr. 45887000)
- 7: Flow restrictor (Order-nr. 13926000)
- 8: Connecting hose (Order-nr. 48018000)
- 9: Strainer (Order-nr. 0700200M)
- 10: connector 8 x 15 mm (Order-nr. 08864000)
- 11: Compression spring (Order-nr. 00869000)
- 12: Metal hose (Order-nr. 28146000)
- 13: Diverter knob (Order-nr. 48411000)
- 14: Diverter (Order-nr. 45443000)
- 14.1: O-Ring Ø6 x Ø2 (Order-nr. 0128300M)
- 14.2: O-Ring (Order-nr. 0120500M)
- 15: Non-return valve (Order-nr. 08565000)
- 16: Connecting hose (Order-nr. 07300000)
- 17: Socket Spanner (Order-nr. 19332000)*

* Optional accessories