

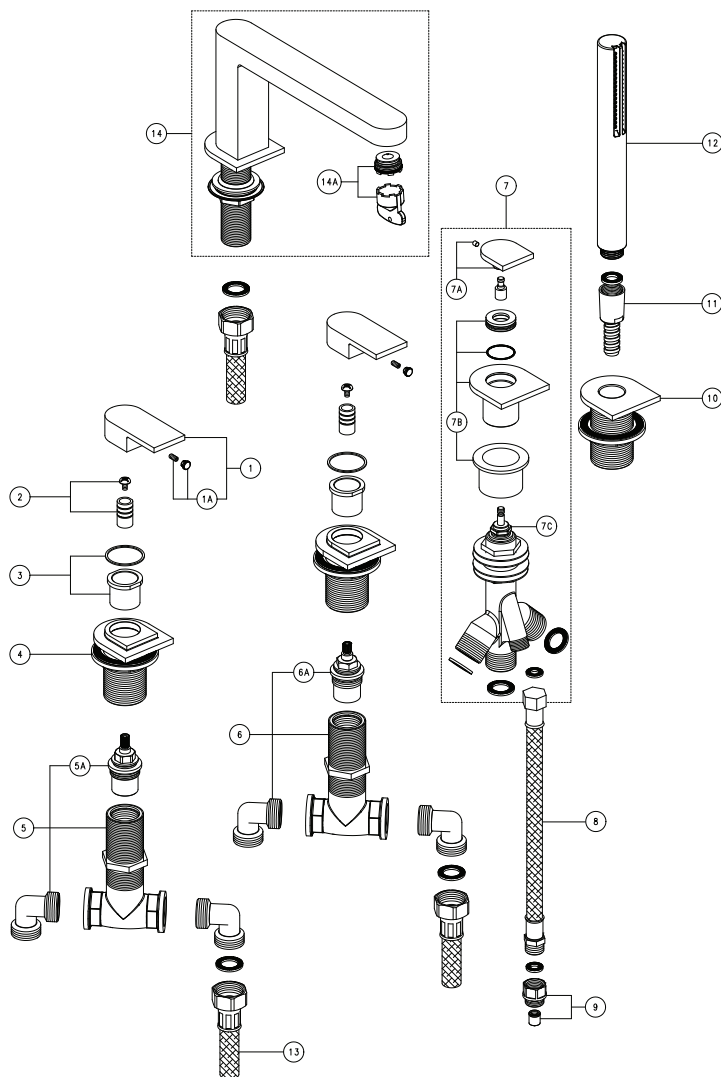
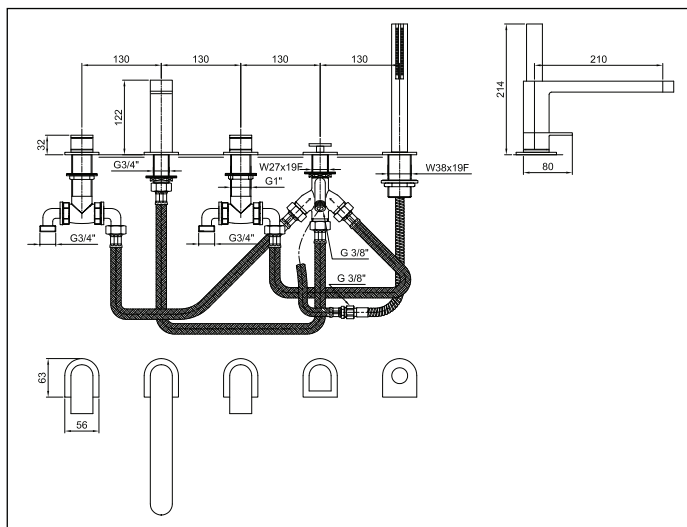
N°	Codice Code Code	Descrizione Description Désignation
1	90 00 9924	<b>Maniglia per art. 6304 Mare</b> Lever for art. 6304 Mare Liever pour art. 6304 Mare
1A	90 00 9533	<b>Confezione fissaggio per maniglia vitone art. 3903S</b> Fixing kit for valve handle art. 3903S Kit de fixation pour manette du robinet pour art. 3903S
2	90 00 9925	<b>Adattatore + vite per art. 6304 - 6404 Mare</b> Adaptor + screw for art. 6304 - 6404 Mare Adaptateur + resort pour art. 6304 - 6404 Mare
3	90 00 9958	<b>Coprivite e anello teflon per art. 6365-6367 Mare</b> Screw cap and Teflon ring for art. 6365-6367 Mare Couvre tete et bague en téflon pour art. 6365-6367 Mare
4	90 00 9959	<b>Anello base, supporto piantana e fissaggio per art. 6365-6367 Mare</b> Base ring, support stand and fixing for art. 6365-6367 Mare Anneau de base, robinet lateral de support et fixation pour art. 6365-6367 Mare
5	90 00 9965	<b>Rubinetto bordo vasca sinistro per art. 6365-6367 Mare</b> Left deck-mount tap for art. 6365-6367 Mare Robinet sur gorge gauche pour art. 6365-6367 Mare
5A	90 00 9151	<b>Vitone ceramico 3/4 sinistro</b> 3/4 left ceramic valve stem Tete de robinet ceramique 3/4 gauche
6	90 00 9966	<b>Rubinetto bordo vasca destro per art. 6365-6367 Mare</b> Right deck-mount tap for art. 6365-6367 Mare Robinet sur gorge droite pour art. 6365-6367 Mare
6A	90 00 9150	<b>Vitone ceramico 3/4 destro</b> 3/4 right ceramic valve stem Tête de robinet céramique 3/4 droite
7	90 00 9961	<b>Deviatore completo per art. 6365-6367 Mare</b> Complete diverter for art. 6365-6367 Mare Inverseur complet pour art. 6365-6367 Mare
7A	90 00 9962	<b>Pomolo deviatore per art. 6365-6367 Mare</b> Knob diverting for art. 6365-6367 Mare Bouton inverseur pour art. 6365-6367 Mare
7B	90 00 9963	<b>Supporto deviatore per art. 6365-6367 Mare</b> Support diverting for art. 6365-6367 Mare Support inverseur pour art. 6365-6367 Mare
7C	90 00 9036	<b>Meccanismo per deviatore</b> Diverter device Meccanisme pour inverseur
8	90 00 9065	<b>Flessibili inox F3/8-M3/8 cm. 60</b> Stainless steel F3/8-M3/8 60 cm. flex.hose Flexibles en inox F3/8-M3/8 60 cm
9	90 00 9919	<b>Gruppo per valvola non ritorno per art. 5965 - 5967 Venezia</b> Group for non-return valve for art. 5965 - 5967 Venezia Groupe clapet anti-retour pour art. 5965 - 5967 Venezia
10	90 00 9964	<b>Supporto doccetta per art. 6365-6367 Mare</b> Support slim for art. 6365-6367 Mare Support douche pour art. 6365-6367 Mare
11	90 00 1982	<b>Flessibile per bordo vasca</b> Flexible for horizontal bath-tub mixer Flexible pour bain-douche sur gorge
12	90 00 9673	<b>Doccia Sun</b> Sun shower Douche Sun
13	90 02 9259	<b>Flessibili inox F3/4-M3/4 cm. 80</b> Stainless steel F3/4-M3/4 80 cm. flex. hose Flexibles en inox F3/4-M3/4 80cm.
14	90 00 9960	<b>Bocca completa per art. 6365-6367 Mare</b> Complete spout for art. 6365-6367 Mare Bec complete pour art. 6365-6367 Mare
14A	90 00 9518	<b>Aeratore Neoperl cachè cascade STD 24x1 cl. d</b> Cache aerator with fixing key flow rate class "d" Aérateur cache avec clé de montage classe de debit "D"

# Mare

## Miscelatore bordo vasca art. 6365

### Bath side group art. 6365

### Bain-douche sur gorge art. 6365



#### USCITA PRIMARIA

#### USCITA SECONDARIA

Pressione - Pressure Pression	Portata - Flow rate Debit d'eau	Pressione - Pressure Pression	Portata - Flow rate Debit d'eau
0,5 bar	9 l/min	0,5 bar	5 l/min
1 bar	13 l/min	1 bar	7 l/min
2 bar	23 l/min	2 bar	9 l/min
3 bar	30 l/min	3 bar	9 l/min
4 bar	35 l/min	4 bar	9 l/min
5 bar	40 l/min	5 bar	9 l/min

Aeratore classe D

Uscita con doccetta SUN