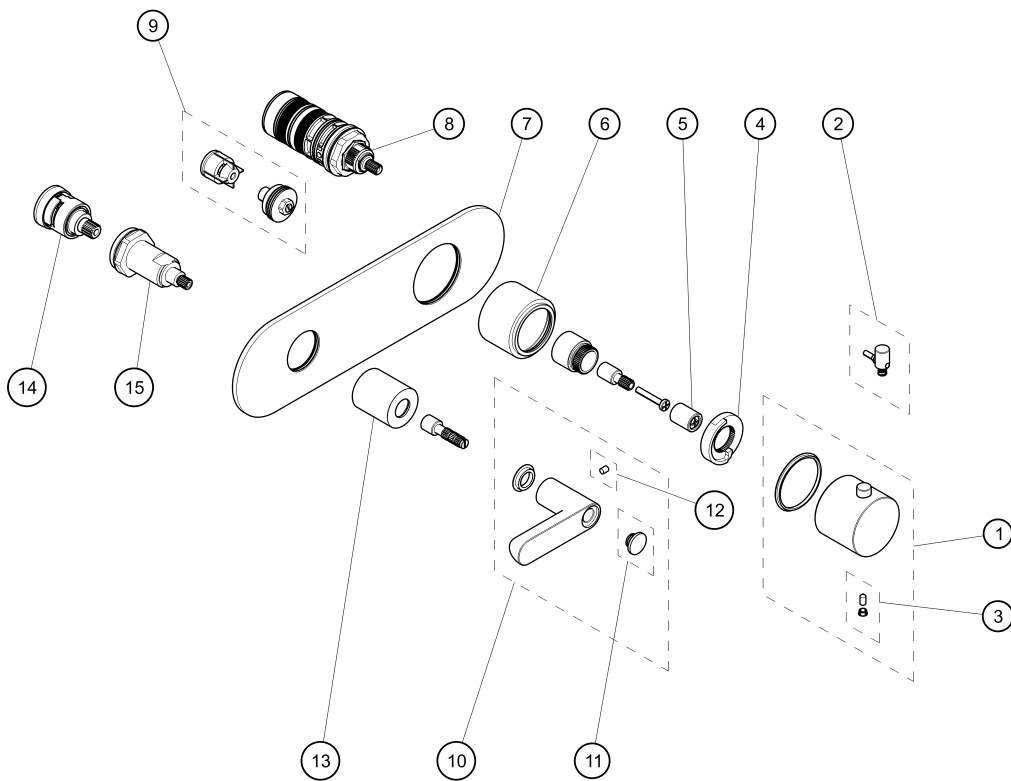


ART. R873B+D373A - Miscelatore termostatico doccia incasso 3/4" / 3/4" built-in thermostatic shower mixer / Mitigeur thermostatique douche à encastrer 3/ 4"



ART. R873B+D373A - Miscelatore termostatico doccia incasso 3/4" / 3/4" built-in thermostatic shower mixer /Mitigeur thermostatique douche à encastrer 3/ 4"

| N° | Codice / Code | Descrizione / Description / Désignaton |
|----|---------------|--|
| 1 | 90_Q917 | Maniglia termostatica completa Complete thermostatic handle Manette thermostatique complete |
| 2 | 90_Q975 | Pulsantino con molla per Art. 3949 Push-button with spring for Art. 3949 Bouton avec resort pour Art. 3949 |
| 3 | 90_9533 | Kit di fissaggio Fixing kit Kit de fixation |
| 4 | 90009531 | Fermo per cartuccia termostatica Clamp for thermostatic cartridge Arrêt pour cartouche thermostatique |
| 5 | 9000Q918 | Adattatore per maniglia Handle's adaptor Adaptateur pour manette |
| 6 | 90_Q919 | Canotto per maniglia Sleeve for lever Manchon pour manette |
| 7 | 90_Q926 | Piastra completa Complete backplate Plaque complete |
| 8 | 9000G571 | Cartuccia termostatica Thermostatic cartridge Cartouche thermostatique |
| 9 | 90008750 | Coppia valvole Couple valves Paire de clapet |
| 10 | 53_R146 | Maniglia Icona Deco Icona Deco handle Manette Icona Deco |
| 11 | 90_Q365 | Placchetta neutra per maniglia Cover screw for handle H/C Plaquette neutre pour manette |
| 12 | 9000Q345 | Grano M4x5 (coppia) Locking screw M4x5 (pair) Vis de blocage M4x5 (couple) |
| 13 | 90_Q479 | Canotto porta deviatore Diverter sleeve Manchon pour inverseur |
| 14 | 90008825 | Deviatore 1 entrata 3 uscite con funzione OFF Diverter 1 entry 3-way with function OFF Inverseur 1 entrée 3 sorties avec fonction OFF |
| 15 | 9000Q639 | Ghiera bloccaggio per deviatore Locking ring for diverter Écrou de blocage pour inverseur |