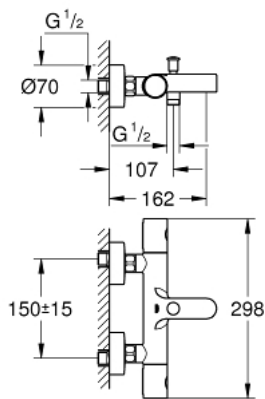
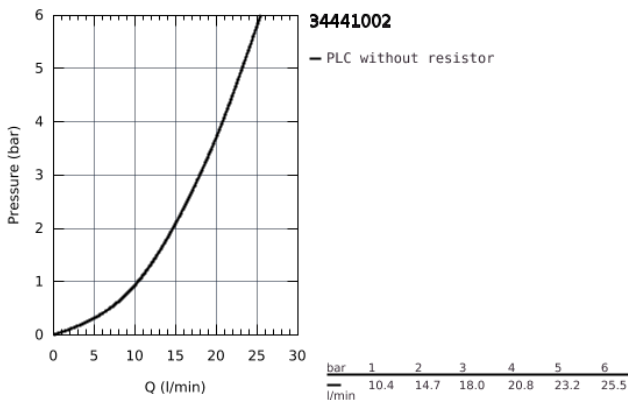


34 441 002 GROHTHERM 1000 COSMOPOLITAN M THERMOSTATIC BATH/SHOWER MIXER 1/2"

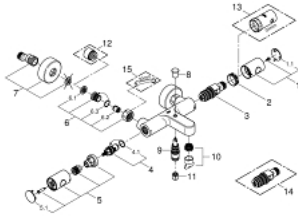


PRODUCT DESCRIPTION

- Colour: Chrome
- wall mounted
- GROHE Long-Life finish
- GROHE MetalGrip ergonomically shaped metal handles
- GROHE SafeStop safety button at 38°C (calibration required)
- GROHE SafeStop Plus integrated temperature limiter at max 50°C
- GROHE Turbostat C3 compact cartridge with wax thermoelement
- integrated mixed water shut off
- automatic diverter: bath/shower
- volume handle with GROHE EcoButton(economy button with individually adjustable economy stop)
- ceramic headpart 1/2", 180°
- shower bottom outlet 1/2"
- mousseur
- built-in non return valves
- dirt strainers
- protected against backflow
- S-unions
- metal escutcheon
- GROHE Water Saving - Less water, perfect flow



34 441 002 GROHTHERM 1000 COSMOPOLITAN M THERMOSTATIC BATH/SHOWER MIXER 1/2"

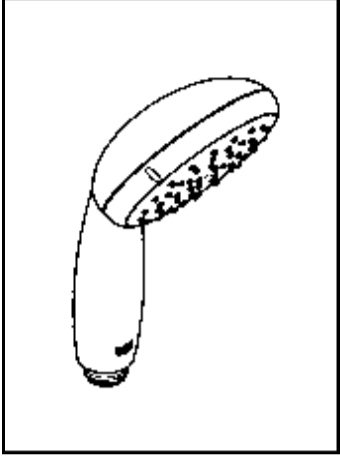


SPARE PARTS, February 2014 – now

- 1: Temperature control handle (Spare part-nr. 47985000)
 - 1.1: Cover Cap (Spare part-nr. 6458500M)
 - 2: retaining ring (Spare part-nr. 47743000)
 - 3: Thermostatic compact cartridge 1/2" (Spare part-nr. 47439000)
 - 4: Ceramic headpart, 1/2" (Spare part-nr. 45346000)
 - 4.1: O-Ring Ø18,2 x Ø1,7 (Spare part-nr. 0392400M)
 - 5: Metal handle 1/2" (Spare part-nr. 47984000)
 - 5.1: Cover Cap (Spare part-nr. 6458500M)
 - 6: Non-return valve (Spare part-nr. 47189000)
 - 6.1: Filter (Spare part-nr. 0726400M)
 - 6.2: Non-return valve (Spare part-nr. 08565000)
 - 6.3: O-Ring Ø17 x Ø2 (Spare part-nr. 0305500M)
 - 7: S-union (Spare part-nr. 12662000)
 - 8: Diverter knob (Spare part-nr. 65648000)
 - 9: Diverter (Spare part-nr. 65655000)
 - 10: Flow restrictor (Spare part-nr. 13926000)
 - 11: Non-return valve (Spare part-nr. 47886000)
 - 12: Extension 3/4", 20 mm (Spare part-nr. 0713000M)*
 - 13: Socket Spanner (Spare part-nr. 19332000)*
 - 14: GROHE TurboStat cartridge 1/2" (Spare part-nr. 47175000)*
 - 15: Special Spanner (Spare part-nr. 19377000)*
- * Optional accessories

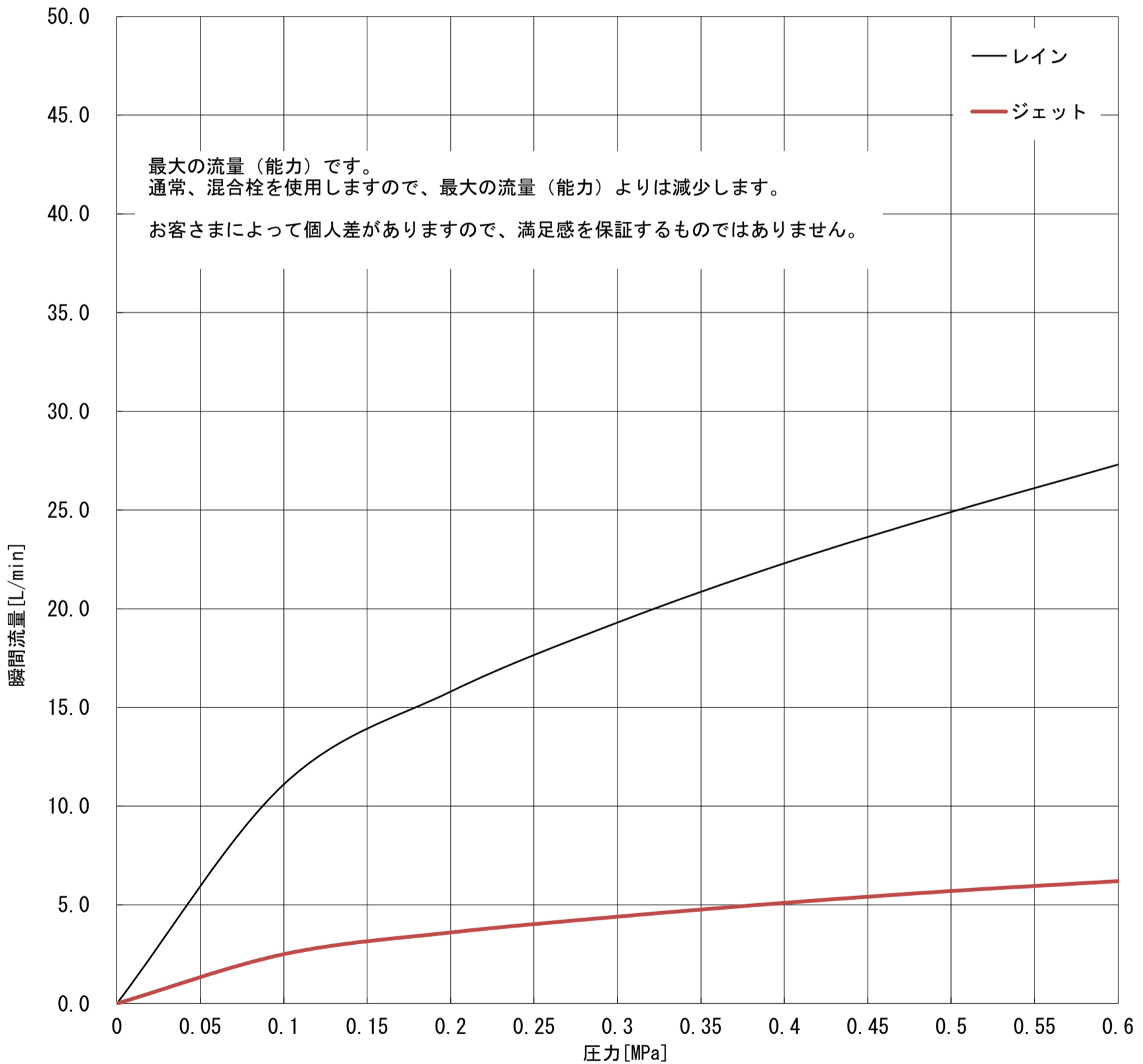
GROHE

2842220J
TEMPESTA



	MPa						
	0	0.1	0.2	0.3	0.4	0.5	0.6
レイン	0.0	11.1	15.8	19.3	22.3	24.9	27.3
ジェット	0.0	2.5	3.6	4.4	5.1	5.7	6.2

ℓ/min



グローエジャパン株式会社

2020年7月

仕様を変更する場合がありますので流量が変わることをご了承ください。
構造、機能が類似している商品は測定しておりません。±5%程度の誤差がある可能性があります。
圧力は器具直前の動水圧力で測定しております。元圧は配管抵抗を考慮して高めに設定してください。