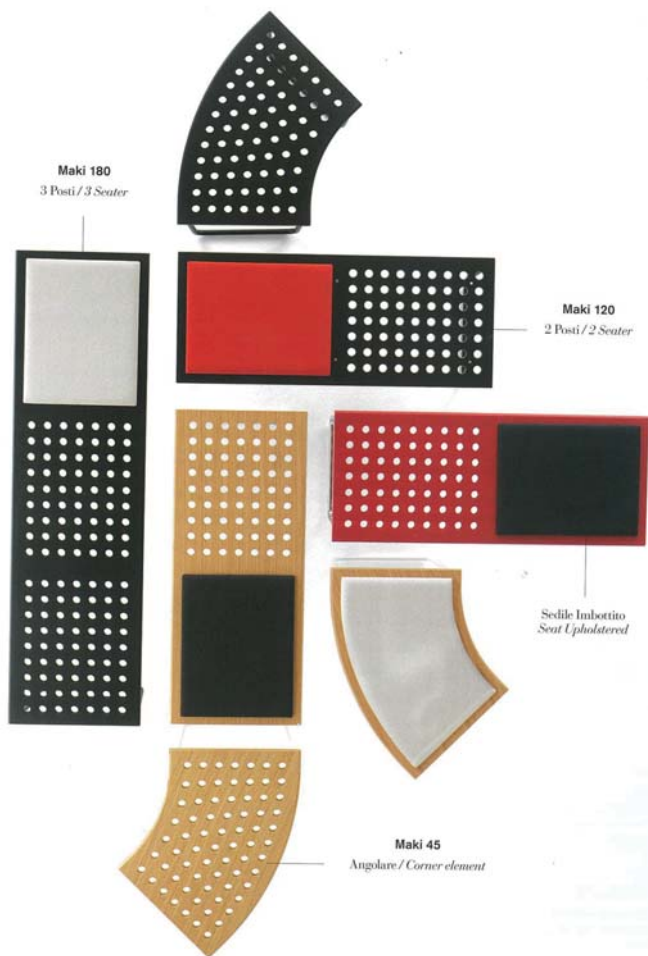


武庫川女子大学 新公江記念館建設工事

# No.240

CRASSEVIG/maki



ラウンド型 ×8台  
ラウンド型 (パディング付) ×8台

~~直線L1200 ×3台 中止~~  
~~直線L1200(パディング付) ×3台 中止~~

直線L1800 ×3台  
直線L1800(パディング付) ×3台

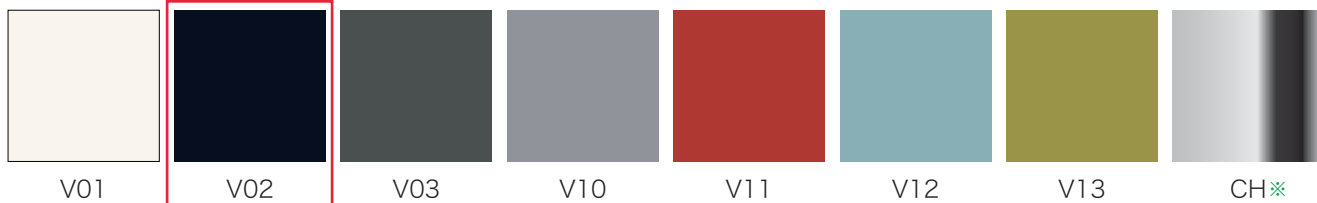
設置場所

4.6.8F ゼミスペース 各階上記台数

[ 天板 ]



[ 脚 ]



Camira Blazer Sliverdale CUZ28

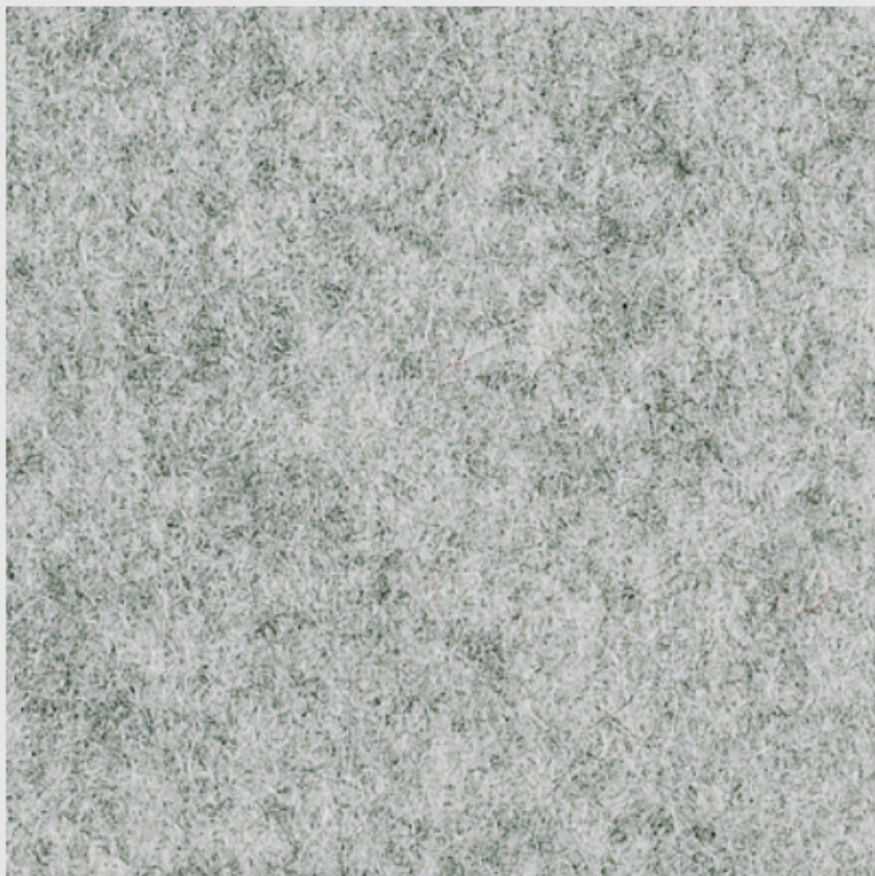
[ パディング ]



※の仕様は現行見積の価格と異なります

Blazer

# Silverdale CUZ28



Blazer is a classic pure new wool upholstery fabric with a billiard cloth felted finish. It is made from premium New Zealand lambswool, where responsible farming provides the highest quality raw material which is soft, clean and bright, which is ideal for spinning, weaving and dyeing. The colour palette is an exciting mix of solids and mélanges across the full colour spectrum, creating a versatile fabric suitable for wide-ranging furniture applications.



Task Seating



Soft Seating



Cigarette & match



Environmental



10 Year guarantee

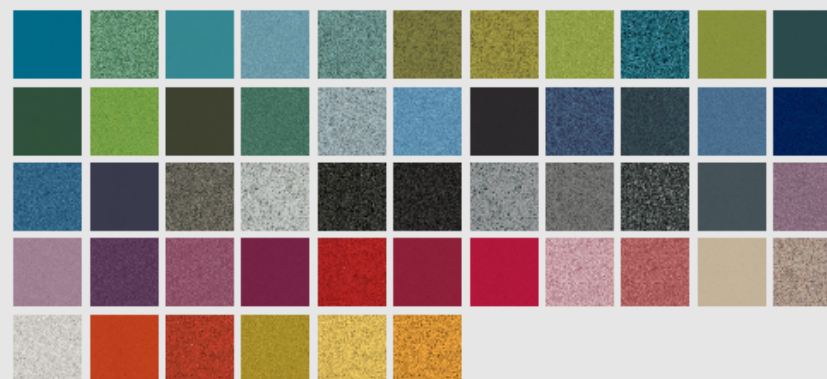


Curtains (with treatment)




Medium Hazard (with treatment)

## Colourways



 [Order fabric sample](#)

 [Order swatch card](#)

[Download swatch card](#)  
715kb PDF

[Download environmental product profile](#)  
398kb PDF

Photographic fabric scans are displayed as a guide and colour variations may occur. We advise you request actual fabric samples before ordering.

[Technical specification](#)

