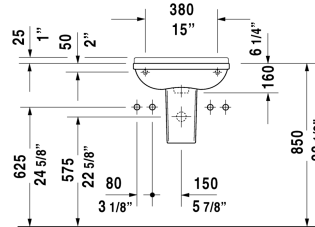
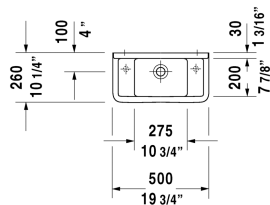


Starck 3 Handrinse basin # 0751500000 / 0751500008 / 0751500009

| < 19 5/8" Inch > |



Handrinse basin	Dimension	Weight	Order number
with overflow, with faucet deck, underside fully glazed, hardware included, wall-mounted, cUPC® listed*, 19 5/8" Inch			
<b>Colors</b>			
00 White			
<b>Variant</b>			
● ●	19 5/8" x 10 1/4" Inch	17.6 lb	0751500000
● faucet hole on right side	19 5/8" x 10 1/4" Inch	17.6 lb	0751500008
● faucet hole on left side	19 5/8" x 10 1/4" Inch	17.6 lb	0751500009
<b>Infobox</b>			
* Complies with following standards: ASME A112.19.2/CSA B45.1, In combination with siphon cover, a pop-up drain can not be used, Not available with WonderGliss			
Push button drain assembly for washbasins with overflow	2" Inch	0.8 lb	005052

All drawings contain the necessary measurements which are subject to standard tolerances. They are stated in inch & mm and are non-binding. Exact measurements, in particular for customized installation scenarios, can only be taken from the finished ceramic piece.