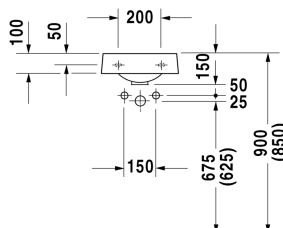
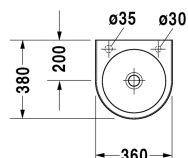


Handrinse basin # 0766350000 / 0766350009 / 0766350008

|< 360 mm >|



| Handrinse basin | Dimension | Weight | Order number |
|--|--------------|----------|--------------|
| without overflow, with tap platform, underneath glazed, 360 mm | | | |
| Colors | | | |
| 00 White Alpin | | | |
| Variant | | | |
| ● ● with pre-punched tap hole for tap on left side, with pre-punched hole for soap dispenser on right side | 360 x 380 mm | 7.600 kg | 0766350000 |
| ● tap hole on left side | 360 x 380 mm | 7.600 kg | 0766350009 |
| ● tap hole on right side | 360 x 380 mm | 7.600 kg | 0766350008 |
| Accessory | | | |
| Continuous flow waste for washbasins without overflow | 50 mm | 0.300 kg | 005024 |

All drawings contain the necessary measurements which are subject to standard tolerances. Exact measurements, in particular for customised installation scenarios, can only be taken from the finished ceramic piece.