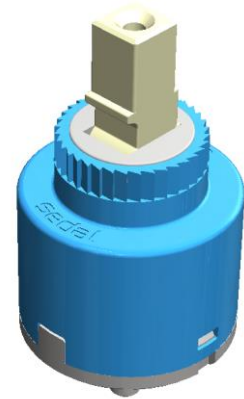


EN-35 S/D

Single lever cartridge
Standard 35mm

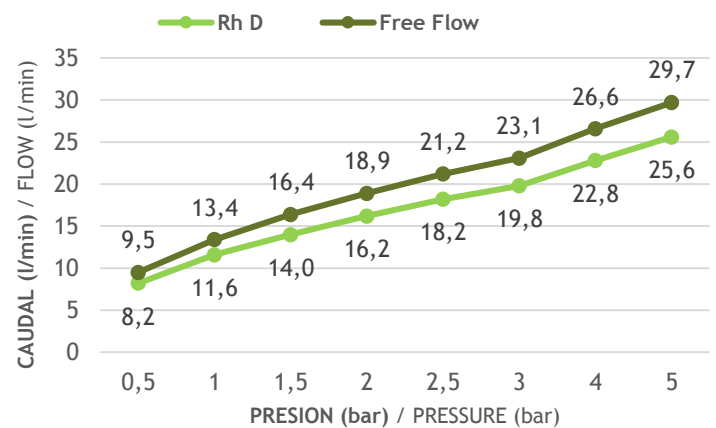
08EN35S0003



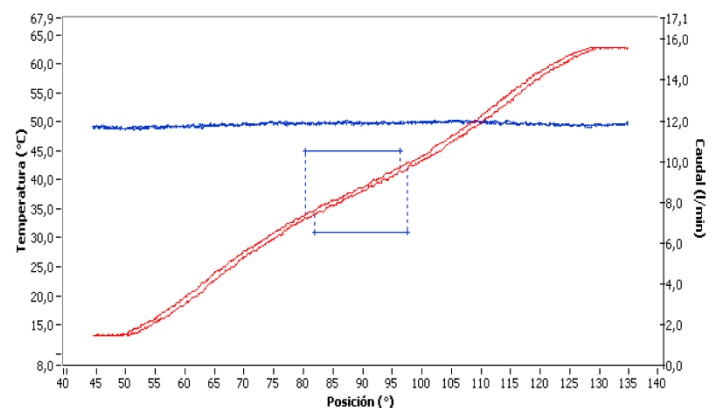
Technical specifications (1)

| | |
|--|--|
| Nut torque/Pitch M1,5 | 10-12 N.m |
| Opening angle | 23° |
| Rotation angle | 90° |
| Working pressure (recommended) | 1 - 5 bar |
| Burst pressure | >50 bar |
| Life cycle | EN 817 ASME 112.18.1 M 70.000 cycles 500.000 cycles |
| Sensitivity (r=49 mm.) | >12° |
| Fidelity | <3 °C |
| Constant 63°C & 50 °C (6 l/min-3 l/min) | < 2,5°C - < 4,5°C |
| Max. Hot water | 90 °C |
| Max. Hot water recommended | 60 - 65 °C |
| Flow rate at 3 bar | |
| Free flow | 23,1 l/min |
| D-Restrictor | 19,8 l/min |
| Noise level (D-Restrictor) | <28 dB(A) (2) |
| Operation torque | |
| Open - close | 0,25 ÷ 0,4 Nm |
| Turn left-right | 0,15 ÷ 0,40 Nm |

Flow



Sensitivity

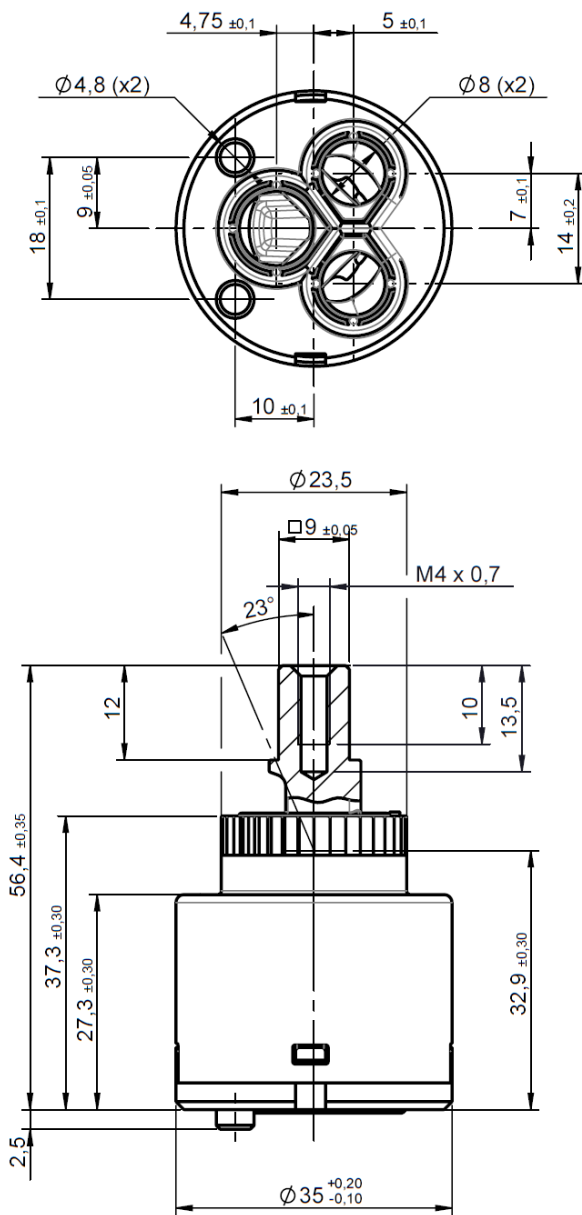


(1) Measured with Sedal's faucet
(2) Considering restrictor & faucet body type

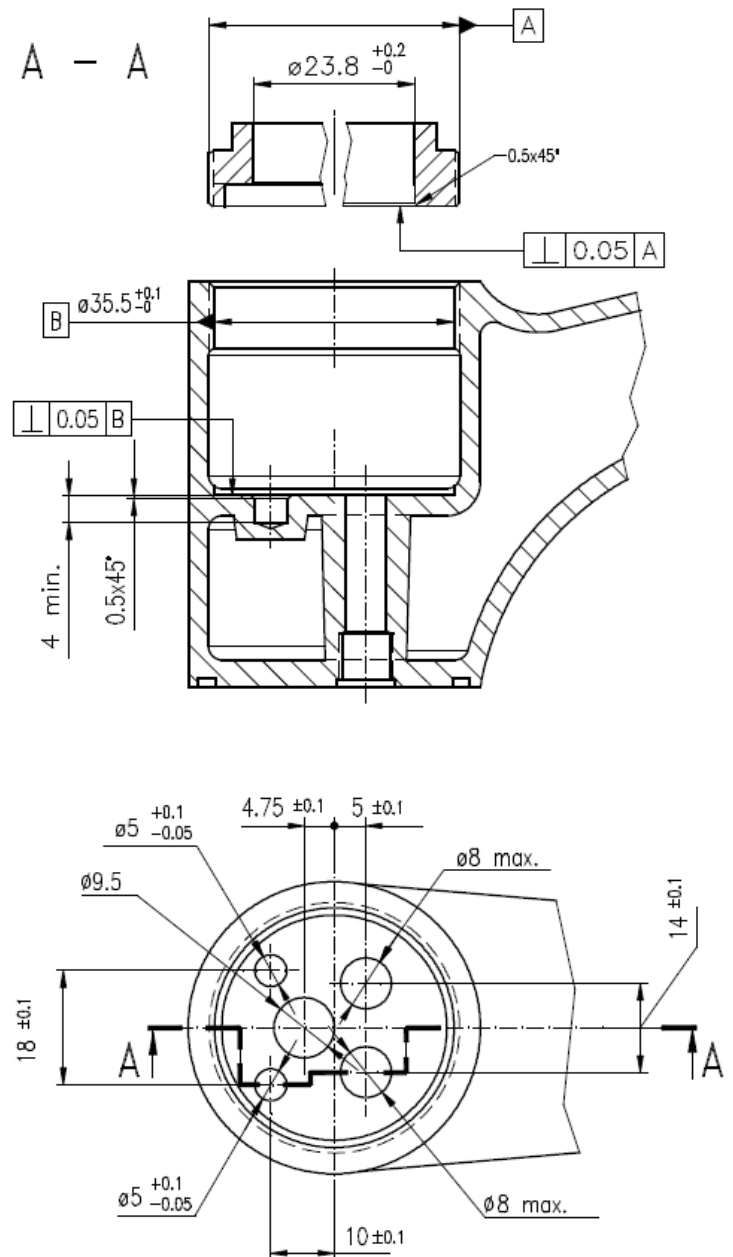
Single lever cartridge
Standard 35mm

EN-35 S/D

Technical dimensions (*)



Machining prescription



(*) Dimensions of the cartridge assembled into the faucet (without vertical gap between the cover and the base)